



# EYE CARE MANAGEMENT WITH BLENREP

**Understanding and managing potential eye-related side effects  
associated with treatment**

## **What is BLENREP?**

BLENREP is a prescription medicine used to treat adults with multiple myeloma who have received at least 4 prior medicines to treat multiple myeloma, **and** their cancer has come back or did not respond to prior treatment. It is not known if BLENREP is safe and effective in children.

BLENREP is approved based on patient response rate. Studies are ongoing to confirm the clinical benefit of BLENREP for this use.

## **IMPORTANT SAFETY INFORMATION**

### **What is the most important information I should know about BLENREP?**

Before you receive BLENREP, you must read and agree to all of the instructions in the BLENREP Risk Evaluation and Mitigation Strategy (REMS). Before prescribing BLENREP, your healthcare provider will explain the BLENREP REMS to you and have you sign the Patient Enrollment Form.

### **BLENREP can cause serious side effects, including:**

**Eye problems.** Eye problems are common with BLENREP. BLENREP can cause changes to the surface of your eye that can lead to dry eyes, blurred vision, worsening vision, severe vision loss, and corneal ulcer. Tell your healthcare provider if you have any vision changes or eye problems during treatment with BLENREP.

Please see IMPORTANT SAFETY INFORMATION continued throughout and full Prescribing Information, including BOXED WARNING and Medication Guide.



**BLENREP**  
belantamab  
mafodotin-blmf  
for injection 100 mg

## Understanding and managing the side effects of BLENREP

Like many options for cancer treatment, BLENREP has a unique side effect profile.

BLENREP can cause serious side effects, including eye problems. Eye problems are common with BLENREP. BLENREP can cause changes to the surface of your eye that can lead to dry eyes, blurred vision, worsening vision, severe vision loss, and corneal ulcer.

The ocular events that can occur during treatment with BLENREP can be managed with supportive care and dose modification, including stopping treatment in some cases.

**There has been no permanent, complete vision loss reported in the pivotal trial.**

### IMPORTANT SAFETY INFORMATION (CONT'D)

- Your healthcare provider will send you to an eye specialist to check your eyes before you start treatment with BLENREP, prior to each dose of BLENREP, and for worsening symptoms of eye problems.
- Even if your vision seems fine, it is important that you get your eyes checked during treatment with BLENREP because some changes can happen without symptoms and may only be seen on an eye exam.
- You should use preservative-free lubricant eye drops at least 4 times per day during treatment with BLENREP as instructed by your healthcare provider.
- You should use caution when driving or operating machinery as BLENREP may affect your vision.
- Avoid wearing contact lenses during treatment with BLENREP unless directed by your eye specialist.

**Decrease in platelets (thrombocytopenia)** is common with BLENREP, and can also be serious. Platelets are a type of blood cell that help your blood to clot. Your healthcare provider will check your blood cell counts before you start treatment with BLENREP and during treatment. Tell your healthcare provider if you have bleeding or bruising during treatment with BLENREP.

**Infusion-related reactions** are common with BLENREP, and can also be serious. Tell your healthcare provider or nurse right away if you get any of the following signs or symptoms of an infusion-related reaction while receiving BLENREP:

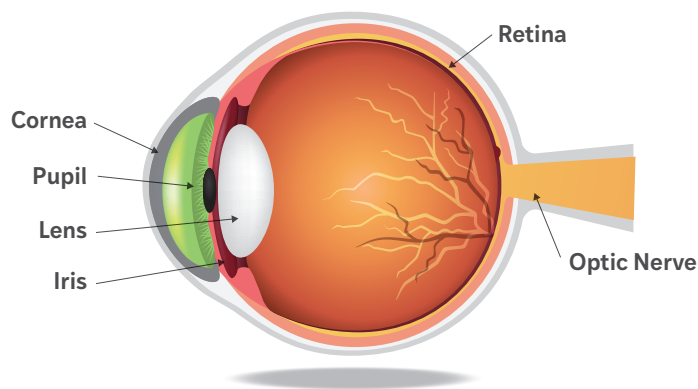
- chills or shaking
- redness of your face (flushing)
- itching or rash
- shortness of breath, cough, or wheezing
- swelling of your lips, tongue, throat, or face
- dizziness
- feel like passing out
- tiredness
- fever
- feel like your heart is racing (palpitations)

Please see **IMPORTANT SAFETY INFORMATION** continued throughout and full Prescribing Information, including **BOXED WARNING** and Medication Guide.

## What to know about the eye and possible side effects that may occur

Within the eye, there are multiple components that work together to help you see.

The cells in the outermost corneal layer are like your skin and regrow, allowing for repair after injury



The **cornea** is the outer surface of the eye; it covers the iris and the pupil. Its role is to focus most of the light that enters the eye. Altogether, there are 5 layers of the cornea. It is on the outermost layer, the corneal surface, where changes might occur during treatment with BLENREP.

### The most common side effect seen with BLENREP was a change to the cornea, known as keratopathy.

**Keratopathy** is any change to the cornea, the outer surface of the eye. These changes can affect your vision. There are 2 types of keratopathy:

With **symptomatic keratopathy**, you may notice symptoms such as:

- Sensitivity to light
- Feeling like there is something in your eye

With **asymptomatic keratopathy**, on the other hand, changes to the cornea may be visible during an eye exam, but you will not notice any symptoms.

Other BLENREP side effects related to the eye include:

- Decreased vision
- Blurred vision
- Dry eye

**It's important to note that while eye problems are common with BLENREP, no permanent, complete vision loss has been reported in the pivotal trial.**

## IMPORTANT SAFETY INFORMATION (CONT'D)

**The most common side effects of BLENREP include** vision or eye changes such as findings on eye exam (keratopathy), decreased vision or blurred vision, nausea, low blood cell counts, fever, infusion-related reactions, tiredness, and changes in kidney or liver function blood tests.

Tell your healthcare provider right away if you get new or worsening unexplained signs or symptoms of lung problems, including shortness of breath, chest pain, and cough.

**Before receiving BLENREP, tell your healthcare provider about all of your medical conditions, including if you:**

- have a history of vision or eye problems.
- have bleeding problems or a history of bleeding problems.

Please see **IMPORTANT SAFETY INFORMATION** continued throughout and full Prescribing Information, including **BOXED WARNING** and Medication Guide.

**BLENREP**  
belantamab  
mafodotin-blmf  
for injection 100 mg



## Signs of vision and eye changes: What to look for while being treated with BLENREP

When your vision is normal, the image provided in an exam (like the example to the right) will appear crisp, without any eye strain or irritation:



Patients in the BLENREP clinical trial experienced keratopathy and vision problems, which may have included the following symptoms:



Double vision



Seeing halos around lights



Blurred vision

Additional eye symptoms that you may experience during treatment with BLENREP include:

- Changes to the surface of the eye, which may increase your sensitivity to light or feel like there's something in your eye
- Changes in visual acuity or a decrease in your ability to see clearly
- Blurred vision
- Dry eye

BLENREP may affect your vision and impact daily activities such as:

- Driving or operating machinery
- Reading
- Other activities that may be important to you (such as watching TV or using a computer)

**Be sure to communicate any changes in your vision to your healthcare provider team.**

### IMPORTANT SAFETY INFORMATION (CONT'D)

- are pregnant or plan to become pregnant. BLENREP can harm your unborn baby. **Females who are able to become pregnant:** Your healthcare provider may do a pregnancy test before you start treatment with BLENREP. You should use effective birth control during treatment with BLENREP and for 4 months after the last dose. Talk to your healthcare provider about birth control methods you can use during this time. Tell your healthcare provider if you become pregnant or think you may be pregnant during treatment with BLENREP. **Males with female partners who are able to become pregnant** should use effective birth control during treatment with BLENREP and for 6 months after the last dose.

Please see **IMPORTANT SAFETY INFORMATION** continued throughout and full Prescribing Information, including **BOXED WARNING** and Medication Guide.

**BLENREP**  
belantamab  
mafodotin-blmf  
for injection 100 mg

## Your treatment calendar: Eye exams are required prior to every infusion

Before beginning treatment with BLENREP, you will need to receive an eye exam—including a visual acuity exam and a slit lamp exam—3 weeks prior to your first dose. Each follow-up exam should be performed at least 1 week after the previous dose of BLENREP and within 2 weeks prior to the next dose. Promptly schedule an eye exam if you have any new or worsening symptoms during treatment.



Receive eye exam



Use eye drops



Avoid contact lenses



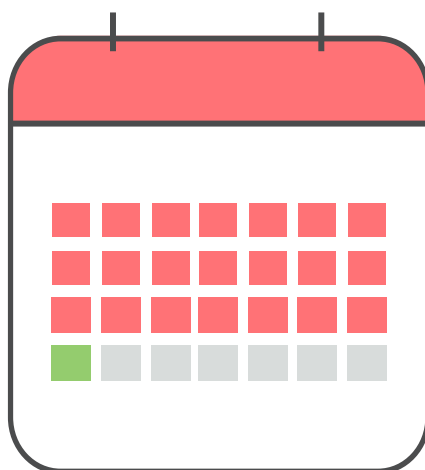
Use caution when driving

### First dose

### Subsequent doses

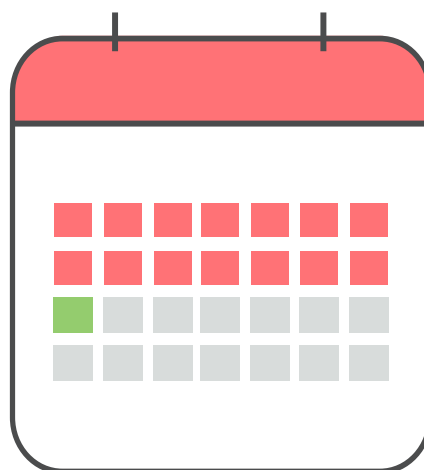
Eye exam within  
3 weeks prior to  
the first dose

First dose



Eye exam within  
2 weeks prior  
to all subsequent  
doses

Subsequent  
doses



Even if your vision seems fine, it is important that you get your eyes checked during treatment with BLENREP because some changes can happen without symptoms and may only be seen on an eye exam.

You should use preservative-free lubricant eye drops at least 4 times a day during treatment with BLENREP as instructed by your healthcare provider.

## IMPORTANT SAFETY INFORMATION (CONT'D)

- are breastfeeding or plan to breastfeed. It is not known if BLENREP passes into your breast milk. Do not breastfeed during treatment with BLENREP and for 3 months after the last dose.
- BLENREP may affect fertility in males and females. Talk to your healthcare provider if this is a concern for you.

**Tell your healthcare provider about all the medicines you take**, including prescription and over-the-counter medicines, vitamins, and herbal supplements.

These are not all the possible side effects of BLENREP.

Please see **IMPORTANT SAFETY INFORMATION** continued throughout and full Prescribing Information, including **BOXED WARNING** and Medication Guide.

**BLENREP**  
belantamab  
mafodotin-blmf  
for injection 100 mg

## What to expect during your regular eye exams

### 1. Visual acuity exam:

Determines your best-corrected visual acuity, or ability to distinguish fine detail:

- A chart is placed in front of you, and you are asked to read the letters
- Results determine if you need corrective eyewear or an update to your prescription



**20/20 vision:** You can see clearly at 20 feet what should normally be seen at that distance.

**20/50 vision:** You can see clearly at 20 feet what a person with normal vision can see at 50 feet.

**20/200 vision:** You can see clearly at 20 feet what a person with normal vision can see at 200 feet.

#### Snellen Visual Acuity chart

20/200	E	1
20/100	F P	2
20/80	T O Z	3
20/63	L P E D	4
20/50	P E C F D	5
20/40	E D F C Z P	6
20/32	F E L O P Z D	7
20/25	D E F F O T E C	8
20/20	L E F O D P C T	9
	F D L T C H O	

### 2. Slit lamp exam:

Examines the surface of the eye—by lighting the front of the eye—to identify damaged cells or any changes to the surface of the eye.

## Finding an eye care professional

Throughout your treatment with BLENREP, eye exams will be required. First consult your treating oncologist for a referral to an eye care professional.

If you still need assistance in finding an ophthalmologist or optometrist to conduct exams and monitor for eye problems, go to **[BLENREP.com/find-an-eye-care-professional](https://www.blenrep.com/find-an-eye-care-professional)**.

Using this online tool, you can find an eye care professional that has been educated by GSK, although it is not required. You may also use your current eye care professional if you have one.

For additional patient support services, visit **[BLENREP.com](https://www.blenrep.com)**.

Or call **1-844-4GSK-ONC (1-844-447-5662)**, Monday-Friday (8 am to 8 pm ET).

**Please see IMPORTANT SAFETY INFORMATION starting on first page and full Prescribing Information, including BOXED WARNING and Medication Guide.**

Trademarks are owned by or licensed to the GSK group of companies.



©2022 GSK or licensor.  
BLMBROC220011 May 2022  
Produced in USA.

**BLENREP**  
belantamab  
mafodotin-blmf  
for injection 100 mg